

Foodservice Equipment • Material Handling, Healthcare & Cleanroom Equipment • Retail Display

314 Series Sinks

*Deep-Drawn Coved Corner
Three-Compartment*



*three-compartment sink
with double drainboards
(faucet not included)*

BOWL SIZES ACCOMMODATE



A WIDE RANGE OF POTS

Item #: _____
Model #: _____
Project #: _____
SIS #: _____

Optional Accessories	Model #	Qty.
Stainless steel legs		
Stainless steel bullet feet		
Lever drains		
Faucets		
Sink covers		
Waste outlets		
Sink kits		



- Heavy gauge stainless steel construction — bowls are type 304; drainboards and backsplash are type 304.
- Deep-drawn seamless coved corner bowls.
- 14" (356mm) water level is standard.
- Swirl-away drainage.
- Legs welded adjacent to sink bowls for maximum weight support and stability.
- 10" (254mm) standard backsplash includes 1" (25mm) upturn and tile edge for easy installation and feathering to wall/splash surface.
- Adjustable non-corrosive bullet feet.
- Die-stamped creased drainboards for positive drainage.

Sink Kits for 314 Series Sinks

Kits include **stainless steel crossbraced legs, stainless steel gussets and stainless steel feet** as listed below.

Kit A

description	add suffix
Includes crossbraced legs, gussets, feet, and T&S faucet*	"CLF"

Kit B

description	add suffix
Includes crossbraced legs, gussets, feet, T&S faucet*, and lever drain	"CLFD"

Kit C

description	add suffix
Includes crossbraced legs, gussets, feet, T&S faucet*, and lever drain with overflow	"CLFDO"

* T&S faucet #313293

Spec sheets available for viewing, printing or downloading from our online literature library at www.eaglegrp.com

314 Series Coved Corner Three-Compartment Sinks

NSF-approved installations:

All EAGLE sinks bearing the NSF Certification Mark are built in compliance with the National Sanitation Foundation Standard Number 2.

EAGLE is also listed to manufacture custom-built sinks in compliance with the National Sanitation Foundation Standard Number 2.

Material:

Sink Bowl – Heavy gauge type 304 stainless steel.

Top – Drainboards, backsplash and rolled rims are heavy gauge type 304 stainless steel.

Legs – 1½" (41mm)-diameter heavy-gauge galvanized tubing with plated 12-gauge gussets and high-impact corrosion resistant fully adjustable bullet feet – crossbracing is 1" (25mm)-diameter heavy-gauge galvanized tubing.

Optional stainless steel legs utilize 16/304 tubing.

Design and Construction Features:

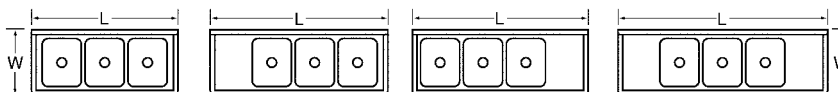
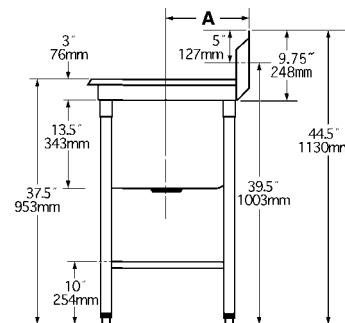
- All bowls have deep-drawn one-piece seamless construction using state-of-the-art hydraulic presses.
- Drainboards, when provided, are integrally welded.
- All sink bowls have a generous radius with a minimum dimension of 3" (76mm) and are rectangular for maximum capacity.
- Leg locations are adjacent to sink bowls, providing increased stability and maximum weight support where needed.
- Leg gussets welded to a die-cut heavy-gauge reinforcing plate.
- Entire assembly is fuse-welded and planished, providing a one-piece seamless sink unit.
- Welded areas are high-speed belt blended to match adjacent surfaces with continuity of satin finish.
- 10" (248mm)-high full length standard backsplash features 1" (25mm) upturn and tile edge for easy installation and feathering to wall/splash surface.
- All outside corners of sink assembly are bullnosed to provide safe, clean edges.
- 14" (356mm) water level — 17" (432mm) flood level.

Mechanical:

- Water supply is ½" (13mm) IPS for hot and cold lines.
- Faucet holes are 1½" (29mm) punched on 8" (203mm) centers; two sets of faucet holes are punched where indicated on schedule.
- Faucets are available as options.
- Basket-type waste drains included fit sink bowls' 3½" (89mm) opening and feature 1½" (38mm) outlet.

Drain location for rough-in

bowl size in.	mm	Dimension A in.	mm
19" x 16"	483 x 406	13½"	343
19½" x 17½"	495 x 445	14"	365
24" x 18"	610 x 457	16½"	422
22" x 22"	559 x 559	15"	381
24" x 24"	610 x 610	16"	406



bowl size width x length	# of drbds	drbd length		weight		overall size width x length		model #
		in.	mm	lbs.	kg	in.	mm	
19" x 16" (483 x 406mm)	0	n/a	85	38.6		26" x 57"	660 x 1448	314-16-3
	1	18"	457	104	47.2	26" x 73½"	660 x 1867	314-16-3-18 R or L
	2	18"	457	123	55.8	26" x 90"	660 x 2286	314-16-3-18
	1	24"	610	110	49.9	26" x 79½"	660 x 2019	314-16-3-24 R or L
	2	24"	610	135	61.2	26" x 102"	660 x 2591	314-16-3-24
	1	30"	762	115	52.2	26" x 85½"	660 x 2172	314-16-3-30 R or L
	2	30"	762	145	65.8	26" x 114"	660 x 2896	314-16-3-30
	1	36"	914	120	54.4	26" x 91½"	660 x 2324	314-16-3-36 R or L
	2	36"	914	155	70.3	26" x 126"	660 x 3200	314-16-3-36
	0	n/a	90	40.8		27½" x 61½"	705 x 1562	314-17-5-3
19½" x 17½" (495 x 445mm)	1	18"	457	109	49.4	27½" x 78"	705 x 1981	314-17-5-3-18 R or L
	2	18"	457	128	58.1	27½" x 94½"	705 x 2400	314-17-5-3-18
	1	24"	610	115	52.2	27½" x 84"	705 x 2134	314-17-5-3-24 R or L
	2	24"	610	140	63.5	27½" x 106½"	705 x 2705	314-17-5-3-24
	1	30"	762	120	54.4	27½" x 90"	705 x 2286	314-17-5-3-30 R or L
	2	30"	762	150	68.0	27½" x 118½"	705 x 3010	314-17-5-3-30
	1	36"	914	125	56.7	27½" x 96"	705 x 2438	314-17-5-3-36 R or L
	2	36"	914	160	72.6	27½" x 130½"	705 x 3315	314-17-5-3-36
	0	n/a	114	51.7		32½" x 63"	819 x 1600	314-18-3
	1	18"	457	133	60.3	32½" x 79½"	819 x 2019	314-18-3-18 R or L
24" x 18"* (610 x 457mm)	2	18"	457	152	68.9	32½" x 96"	819 x 2438	314-18-3-18
	1	24"	610	139	63.1	32½" x 85½"	819 x 2172	314-18-3-24 R or L
	2	24"	610	164	74.4	32½" x 108"	819 x 2743	314-18-3-24
	1	30"	762	144	65.3	32½" x 91½"	819 x 2324	314-18-3-30 R or L
	2	30"	762	174	78.9	32½" x 120"	819 x 3048	314-18-3-30
	1	36"	914	149	67.6	32½" x 97½"	819 x 2477	314-18-3-36 R or L
	2	36"	914	184	83.5	32½" x 132"	819 x 3353	314-18-3-36
	0	n/a	120	54.4		29" x 75"	737 x 1905	314-22-3
	1	18"	610	139	63.1	29" x 91½"	787 x 2324	314-22-3-18 R or L
	2	18"	610	158	71.6	29" x 108"	787 x 2743	314-22-3-18
22" x 22"* (559 x 559mm)	1	24"	610	145	65.8	29" x 97½"	737 x 2477	314-22-3-24 R or L
	2	24"	610	170	77.1	29" x 120"	737 x 3048	314-22-3-24
	1	30"	762	150	68.0	29" x 103½"	737 x 2629	314-22-3-30 R or L
	2	30"	762	180	81.6	29" x 132"	737 x 3353	314-22-3-30
	1	36"	914	155	70.3	29" x 109½"	737 x 2781	314-22-3-36 R or L
	2	36"	914	190	86.2	29" x 144"	737 x 3658	314-22-3-36
	0	n/a	125	56.7		31" x 81"	787 x 2057	314-24-3
	1	18"	610	144	65.3	31" x 97½"	787 x 2477	314-24-3-18 R or L
	2	18"	610	163	73.9	31" x 114"	787 x 2896	314-24-3-18
	1	24"	610	150	68.0	31" x 103½"	787 x 2629	314-24-3-24 R or L
24" x 24"* (610 x 610mm)	2	24"	610	175	79.5	31" x 126"	787 x 3200	314-24-3-24
	1	30"	762	155	70.3	31" x 109½"	787 x 2781	314-24-3-30 R or L
	2	30"	762	185	83.9	31" x 138"	787 x 3505	314-24-3-30
	1	36"	914	160	72.6	31" x 115½"	787 x 2934	314-24-3-36 R or L
	2	36"	914	195	88.5	31" x 150"	787 x 3810	314-24-3-36
	0	n/a	125	56.7		31" x 81"	787 x 2057	314-24-3
	1	18"	610	144	65.3	31" x 97½"	787 x 2477	314-24-3-18 R or L
	2	18"	610	163	73.9	31" x 114"	787 x 2896	314-24-3-18

* Units with these bowl sizes feature two sets of faucets.